

# The Meadows at Stallion Run

Hawthorn | 1805 | *From \$314,990*

APPROX. 1,805 SQ. FT. | 2-STORY | 4 BEDS | 2.5 BATHS | 2-BAY GARAGE



Elevation A



Elevation B



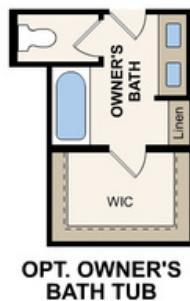
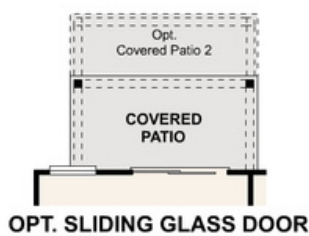
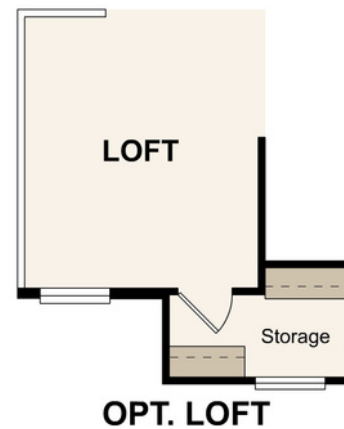
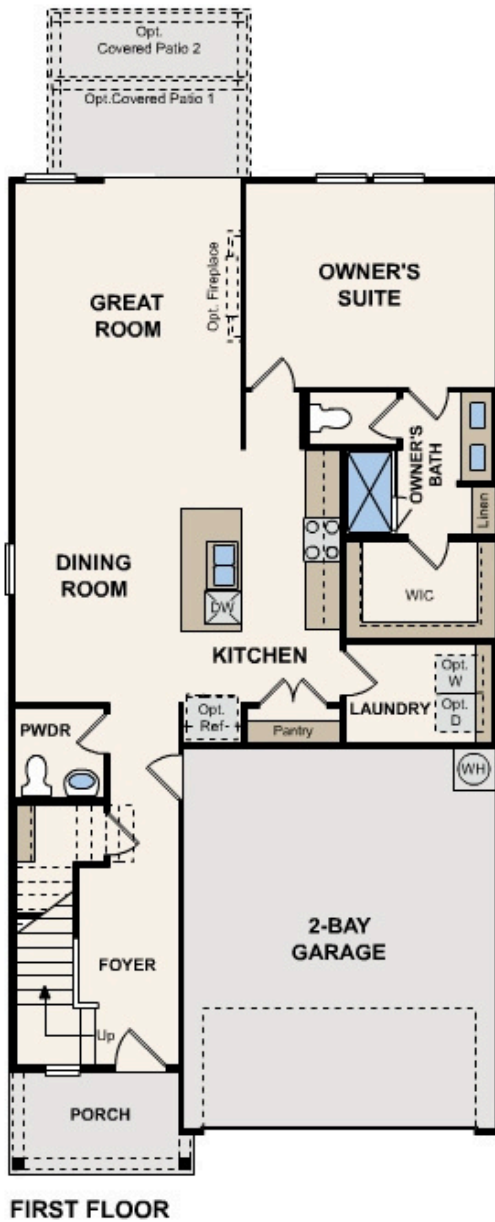
Elevation C



Elevation D



Prices, plans, and terms are effective on the date of publication and subject to change without notice. Square footage/dimensions shown is only an estimate and actual square footage/dimensions will differ. Buyer should rely on his or her own evaluation of usable area. Depictions of homes or other features are artist conceptions. Hardscape, landscape, and other items shown may be decorator suggestions that are not included in the purchase price and availability may vary. ©2026 Century Communities, Inc.



Prices, plans, and terms are effective on the date of publication and subject to change without notice. Square footage/dimensions shown is only an estimate and actual square footage/dimensions will differ. Buyer should rely on his or her own evaluation of usable area. Depictions of homes or other features are artist conceptions. Hardscape, landscape, and other items shown may be decorator suggestions that are not included in the purchase price and availability may vary. ©2026 Century Communities, Inc.